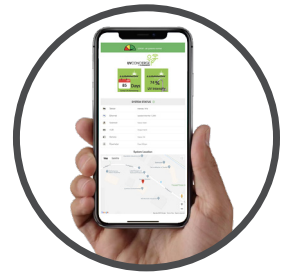


## OPTIONAL EQUIPMENT MODULES

Available for use on BLACKCOMB 5.1  
and BLACKCOMB 6.1 UV Controllers

### UV Concierge

Available for WEB, iOS, and Android platforms providing live, dynamic feedback on all features and functions of your UV system.



### SHERPA (Water Quality Monitor)

Installs on all LUMINOR UV systems and allows for remote monitoring of all major and minor alarms that take place on the main UV system. Three LED's visually display system functionality from up to 150' (46m) away.



### Custom Dealer Programmer

Customize your UV controller with your own company name, logo, website, QR code and contact information. Capture the lucrative replacement lamp market by creating a direct link back to your own website!



### Ultrasonic Flow Meter

Ensure that your UV is running as efficiently and effectively as possible. By harnessing the power of ultrasonic waves, the flow meter enables your UV system to dim power in times of low to no flow, saving you money on energy, reducing water temperature, and decreasing the risk of fouling.



## UV Sensor Module

Allows the 254nm UV wavelength to be measured and displayed via the controller. The sensor plugs directly into the controller and is mounted in the sensor port located on standard reactors.



## Solenoid Module

Used to power a remote normally closed solenoid valve (not included). Solenoid will close on lamp failure or when low UV conditions are detected by the sensor. Available in 110V. (MOD-SOL1) or 230V. (MOD-SOL2).



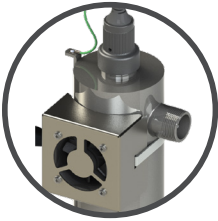
## TRV (temperature management relief valve)

TRV allows for a small amount of water to be physically released (dumped) from the UV unit to allow for cooling of the water. Used in applications of extended “no flow” conditions, or when the temperature of the treated water is of a critical nature.\*



## Cooling Fan

To reduce water temperature inside the reactor through mechanics and convection without wasting any water. Runs independently and continuously. Comes with a compact modular power adapter with interchangeable AC clips that operates from 90-264V (47-63Hz.). Only available for 3.5” reactors.\*



## Module Splitter

This module helps organize all the modules connected to BLACKCOMB 5.1/6.1 systems. Up to 3 modules, including sensors, can plug into the MOD-SPLITTER at once. Managing modules becomes easier as they are all plugged into one, central location.



## 4-20mA Module

Used for signal transfer to a remote device such as a data logger or computer. Order MOD-420.



## Remote Alarm (Dry Contact) Module

Used for signal transfer to a remote alarm or dry contacts. Order MOD-RAM.



## Expansion Modules

BLACKCOMB 5.1 and BLACKCOMB 6.1 controllers incorporate an “Infinite Expandability Port” (IEP) which allows for expansion of a the UV sensor and all other modules. Each module (including the sensor) comes with both a male and female connection. Connect any device to the controller and all subsequent devices are then connected into the female end of last device added in a “daisy chain” configuration.

\* Also available on 4.1 systems

## Manufacturer's Warranty

**REACTORS**—Ten (10) year Limited Warranty  
**ELECTRONICS**—Three (3) year Limited Warranty  
**UV LAMPS**—One (1) year Limited Warranty  
**QUARTZ SLEEVES**—One (1) year Limited Warranty



See [luminoruv.com](http://luminoruv.com) for complete warranty document, including conditions and exclusions.



**LUMINOR Environmental Inc.**  
80 Southgate Drive, Unit 4  
Guelph, Ontario, CANADA  
N1G 4P5

P: (519) 837-3800  
TF: (855) 837-3801  
F: (519) 837-3808  
e-mail: [info@luminoruv.com](mailto:info@luminoruv.com)  
web: [www.luminoruv.com](http://www.luminoruv.com)

